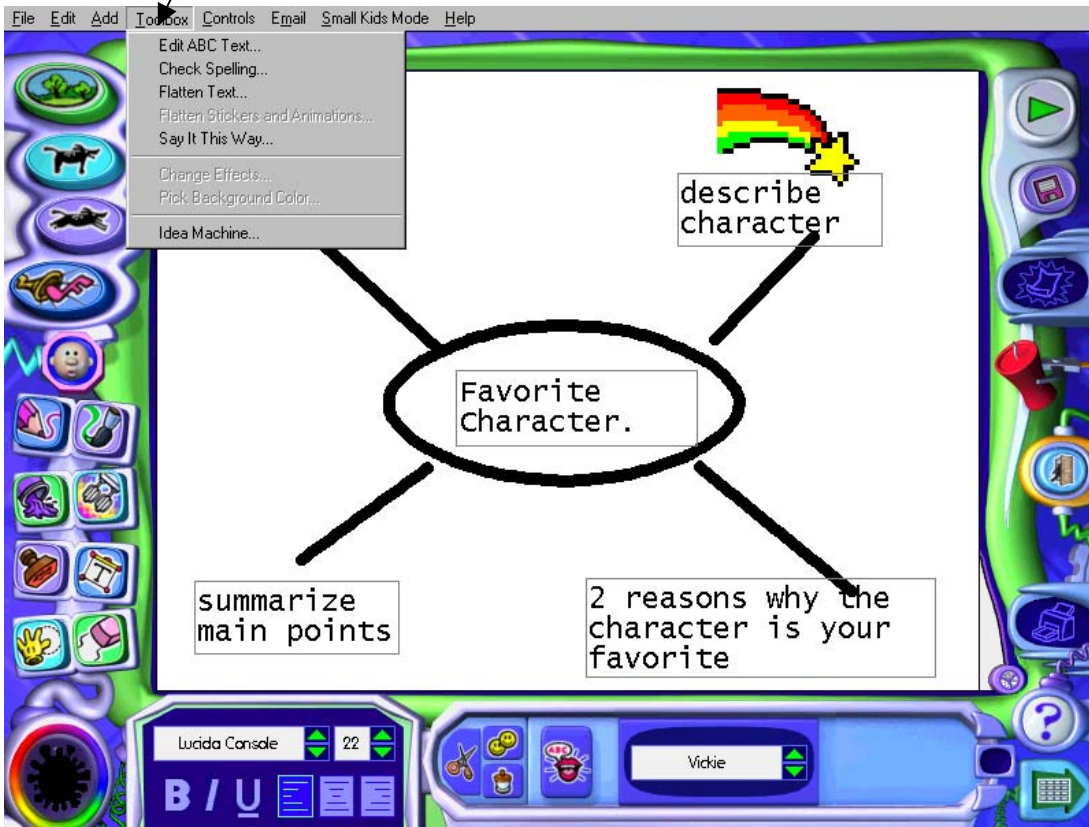


How to Copy a Kid Pix Deluxe 3 Image into a Word Processor

By Janey Mayo

In Kid Pix 3

1. Create the image to copy.
2. Select Toolbox->Flatten Text->Select All
3. Select Toolbox->Flatten Stickers and Animation-> Select All



(note: at this point, you may wish to save your file)

4. Select the Grabber Tool (yellow hand)
The default is the Scissors (cut) option.
Select a shape option (normally a square).
Click and drag the image you want to copy.
Click the copy icon (double smiley face).
You will now see a fuzzy gray box instead of the image.
5. Close Kid Pix.
6. **OPEN** the word processor and **Paste**.