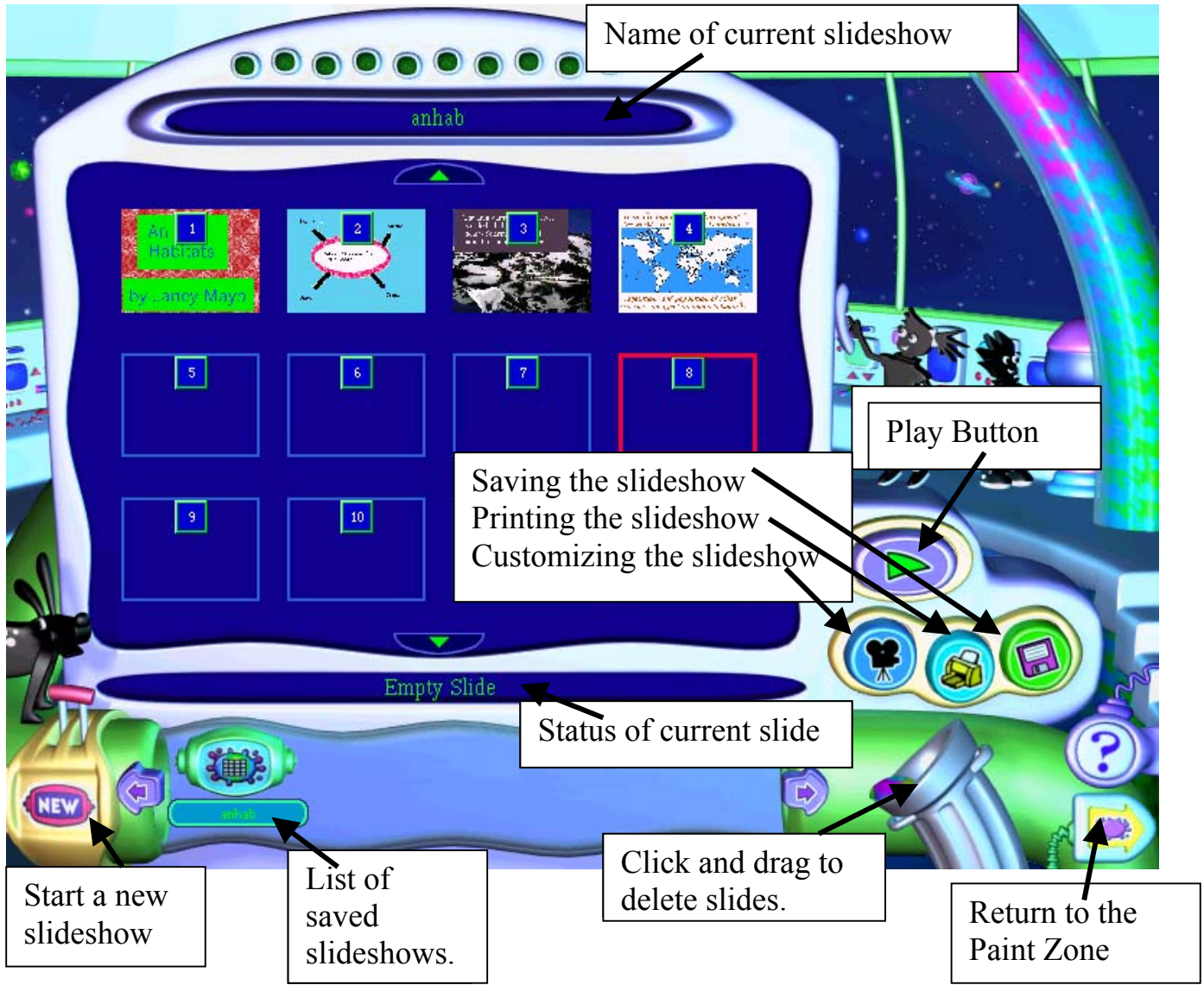


The SlideShow Screen for KP3

By Janey Mayo



NOTES:

Customizing Your SlideShow

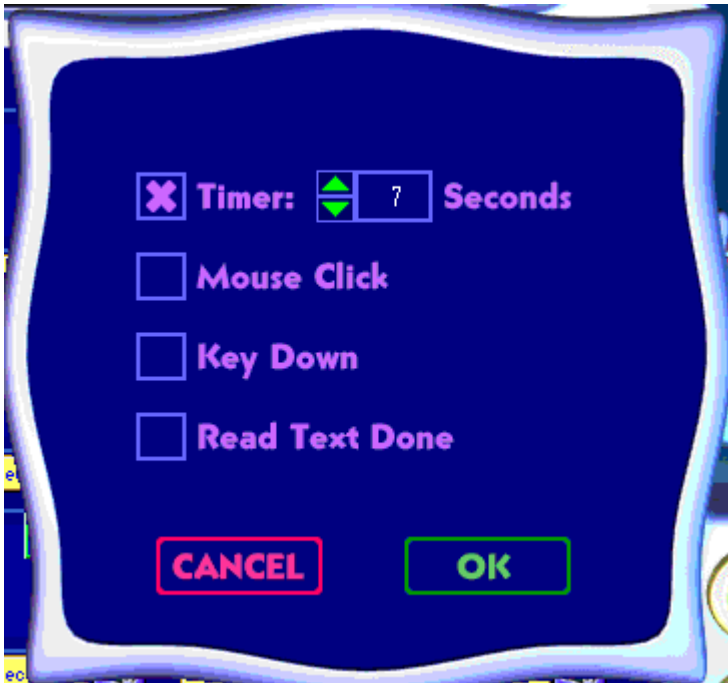


Click the My SlideShow button and the 3 customizing options appear:

Transition Effects, Advance Settings, Audio Options



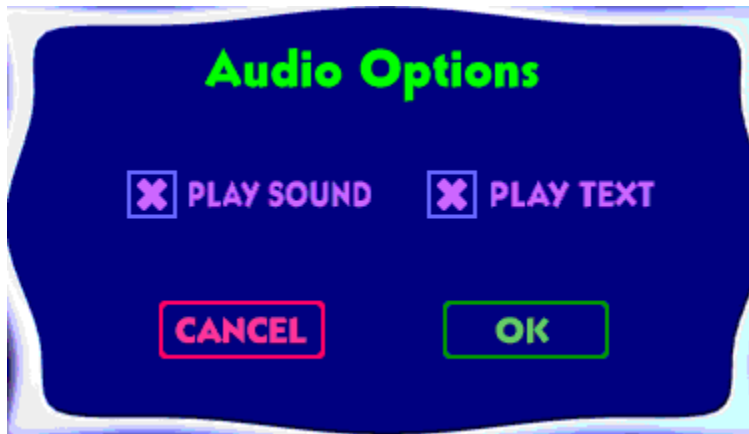
Advance Settings - select how you want to advance the slides.



Transition Effects - select a visual and sound transition effect.



Audio Options - select to hear sound and/or text.



Possible Teacher Slideshows:

1. Learning Centers: include scanned pictures of worksheets
2. Bulletin Boards: scan in old work
3. Mini Lessons: for topics that are used everyday ex. The Writing Process
4. Procedural: Playground Safety; Fire Drill Procedures, Cafeteria Rules
5. Open House: scanned images of student work, digital pictures of students at work

Teaching Tips:

1. Students should always begin with a storyboard.
2. Students can work alone or in groups.
3. Organize student files in folders.
4. Include a number order when naming the picture files.
5. Discourage sound transitions and animations that are distracting.
6. Use text-to-sound for a reason: is it more important to hear the student communicating?

You can use these Graphics (with ADD/Add a Graphic):

- JPEG and GIF (from the Internet too)
 - Scanned images
 - Digital images (camera)
 - Images from Print Shop, Click Art etc.
- Quick Time Movies
- Bitmap images (from older versions of Kid Pix)

Memory:

- Can save 10-15 slides on a disk if only using Kid Pix pictures.
- Text-to-speech and imported graphics use a lot of memory and saving to a disk can be a problem.
- File/Export allows you to copy your slideshow to play on another computer (with or without Kid Pix) but text-to-speech is not included.

Frequently Asked Questions

1. After I have saved my slideshow, how do I add more slides?

Return to the Paint Zone. Create a slide and save it. Then switch to the Slideshow screen and Open your slideshow.

To insert the new slide at the end of the slideshow, simply click the Load button for the slideholder and Open the file.

To insert the new slide within the slideshow, you need to first click and drag the pictures to new locations to create an open slideholder. Then click the Load button to insert the slide.

Remember to always save the updated version of the slideshow.

2. The students have "blank" slides in their slideshow.

The students have accidentally saved a blank screen. After updating a slide, students need to select "yes" to replace it when they save. The program will automatically revert to a blank screen. Students sometimes get confused and save again.

Unfortunately, this time when they click "yes", the blank screen replaces their original slide.

3. How do I delete a picture from my slideshow?

Click and drag the picture to the trash can. Or select it and press Delete on the keyboard.

3. Why does my slideshow show tiny little pictures?

Unlike PowerPoint, the Kid Pix slideshow feature does not save the slide files. The slideshow only saves the transitions and effects, and points to the slide in memory. If the slide has been saved in a memory area that the slideshow cannot find (such as a floppy drive), then the tiny pictures appear. So always save your slides in a stable place (like a folder), and re-Load the files. Then re-save the slideshow, and now it should work.

4. When I am in the slideshow feature, I cannot find my slides when I select File/Open.

That is correct. Kid Pix is trying to help you organize your files. Only slideshow files are saved in the My Slideshows folder (.sho). If you want to see your slide files, switch to the Paint Zone (.kxp).